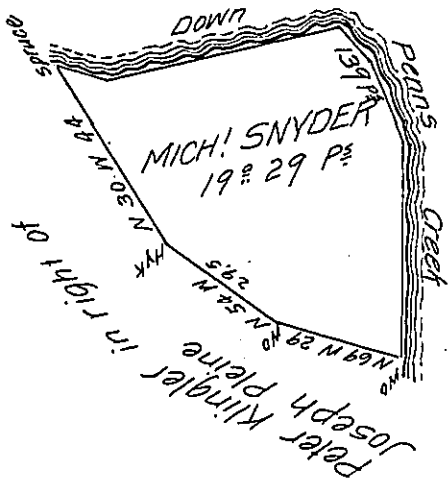


Courses & Distances Down Penns
Creek Beging Spruce



S	73	E	12
N	80	E	52
S	40	E	10
S	20	E	18
S	3	W	47
			<u>739 P 1/2</u>

Situate in Penns township in the County of Union (late Northumberland) Surveyed the 5th day of November AD 1775 for Michael Snyder in pursuance of his Warrant bearing date the 3^d day of May AD 1775 Pr William Maclay Esq then Deputy Surveyor. Resurveyed the 14th day of August AD 1823 for James Henderson Containing Nineteen Acres and twenty nine perches with the usual allowance of Six P^{er} Cent &c.

To Samuel Cochran Esq
Surveyor General Penn^a

P^{er} Jn^{es} Hayes D.S.

IN TESTIMONY that the above is a copy of the original remaining on file in the Department of Internal Affairs of Pennsylvania, made conformably to an Act of Assembly approved the 16th day of February 1833, I have hereunto set my hand and caused the Seal of said Department to be affixed at Harrisburg, this fourth day of February 1907

Isaac B. Brown
Secretary of Internal Affairs.